



[AXS ENTERTAINMENT](#) / [ARTS & ENTERTAINMENT](#) / [ARTS & EXHIBITS](#)

See also: [arts & exhibits](#), [oakland art scene](#), [sculpture](#), [neon](#), [oakland museum of california](#)

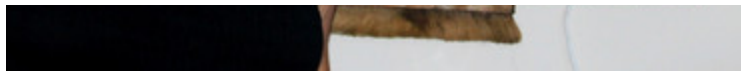
## Local artist lights up 'Fresh Art' with her found object and neon creations

June 27, 2013

7:58 PM MST



[View all](#)  
[9 photos](#)



Sculptor Anne Pinkowski with her work "Apothecary"

*Photos courtesy of Anne Pinkowski*

Local sculptor [Anne Pinkowski](#) is one of fifty-five artists who have been selected to exhibit in a juried exhibition being held by the [Marin Society of Artists](#). The show entitled "Fresh Art" is being juried by René de Guzman, Senior Curator at the [Oakland Museum of California](#), and includes nearly one hundred pieces. The show runs July 7 through August 3, 2013, with an Awards Reception taking place Sunday, July 14, 5 to 8pm at the Marin Art and Garden Center gallery, 30 Sir Francis Drake Blvd, Ross, California.

Pinkowski's contribution, "Apothecary" is a 31 x 35 inch wall-mounted [sculpture](#) constructed of [neon](#) and found objects that would look at home in an old fashioned pharmacy – a shoe stretcher, a hand broom, and various bottles that in the imagination seem to contain mysterious ointments and remedies. On the lower right hand side sits a neon sculpture, just over a foot tall resembling an old fashioned coat rack. The center of the neon element is blue (achieved by use of mercury), with red fingerlings (achieved by neon gas).

---

**“When I create neon, I don’t have a concept of how I will use it in a piece” said Pinkowski.” These elements are combined with found objects much later in my process.”**

---

A resident of nearby San Leandro, Anne Pinkowski grew up and went to school in Oakland. She first began to exhibit her sculptures in the nineties after graduating from UCLA with a degree in Fine Art. She currently studies at [The Crucible](#) in Oakland under Christian Schiess and Norman Moore, and her work has been exhibited around the country.

---

**“I was an army brat. Oakland is my home because it was here in Oakland’s Glenview neighborhood where I grew up and where my mother still lives.”**

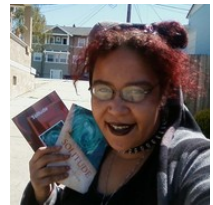
---

"Apothecary" is only one of the many imaginative sculptures Pinkowski has created using her process. Photos of her work are available on her website, [A Found Object](#).

---

**“***“Making the piece is only one aspect of what I enjoy about working with found objects,” said Pinkowski. “For me, it’s the whole adventure of collecting. I am drawn to objects where you can really tell that a human used them and objects discarded due to advances in technology/design. It’s like cataloging the evolution of man and the neon elements that I contribute are how I am able to say ‘Anne was here!’”***”**

---



**Sumiko Saulson**  
Oakland Art Scene Examiner